

# The Complete Spa Care Guide



## Goldhorizons

### CONTENTS

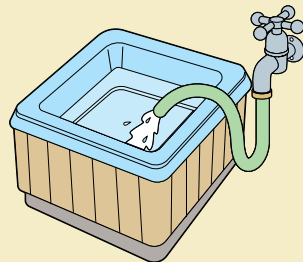
Commissioning your spa	1	Oxidise your spa water	5
Circulation and filtration	2	Cleaning your spa	6
Test your spa water	2	Draining and refilling your spa	7
Balance your spa water	3	Speciality Products	7
Sanitise your spa water	4		

# Commissioning your spa

The supplier of your spa may have commissioned your spa for you. If not, we would recommend the following steps to ensure your spa is commissioned properly.

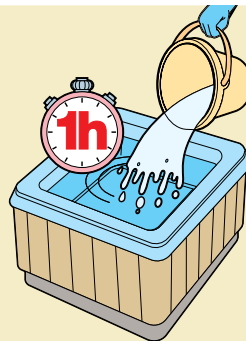
## STEP 1

It is important that your hot tub is dosed with a high level of sanitiser immediately after it is first filled with fresh water. This is to ensure that any water remaining in the spa plumbing from factory testing is treated and bacteria-free. Always use mains water to fill your spa and if using a hose, allow water to flush out for several minutes before filling the spa.



## STEP 2

Once the spa is filled and before turning the jets on, add a commissioning dose of **Gold Horizons Spa Rapid Shock** to the spa water to achieve 20mg/l (ppm) of free chlorine circulated and maintained for a minimum of 2.5 hours or 50mg/l (ppm) circulated and maintained for a minimum of 1 hour.



**HANDY TIP:** Dissolve granules in warm water (30 - 40°C) prior to adding to the tub.



## STEP 3

Open the air control valves and operate all diverter valves to ensure that the water flows through all the hot tub jets and pipework.

Spa volumes		Spa Rapid Shock Commissioning Dose	
Litres	Gallons	2.5 hour treatment	1 hour treatment
1,000	220	30g	75g
1,500	330	45g	110g

**Note: Only once the chlorine level falls to 5mg/l (ppm) or below can the spa be used.**

# Circulation & filtration

The equipment supplied with spas varies from make-to-make but all hot tubs have at least one pump and a filter. It is the pump that creates the flow (circulation) of water through the pipework and built into the circulation will be the filter. As the water passes through the filter cartridge, debris is removed from the water and collected within the filter cartridge. The combination of good filtration, circulation and chemical treatment is essential to keep your spa water clear, clean and healthy.

## Testing your spa water

Test your spa water daily using either test strips or a pooltester whether the spa is in use or not.

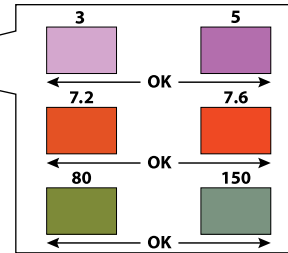
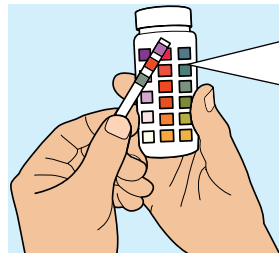
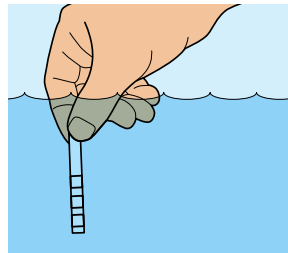
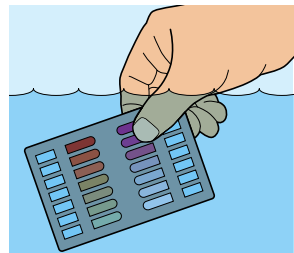
**Remember, without daily testing, it really is just guess work.**

Test Strips will quickly let you know if levels are correct or need adjusting. Always follow the instructions on the test strip bottle for best results.

**Test strips are available in a variety of different options (i.e. 3-Way, 4-Way & 6-Way).**

**Please ensure you choose test strips to match your chosen sanitiser (chlorine or bromine).**

Pooltesters use test tablets to determine the chlorine or bromine and pH levels in the spa. A pooltester is generally considered to be a little more accurate compared with test strips.



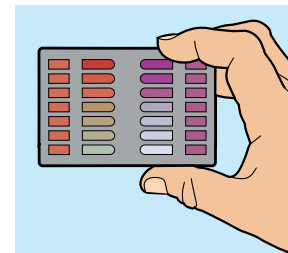
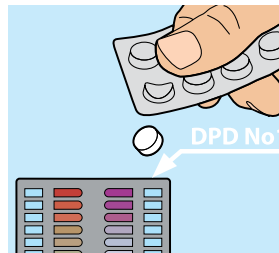
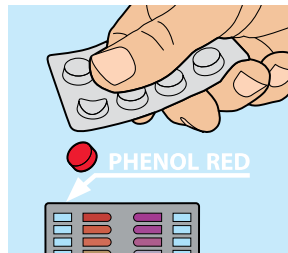
**CHLORINE**  
Ideal level  
**3 - 5**  
ppm

**BROMINE**  
Ideal level  
**3 - 5**  
ppm

**pH**  
Ideal level  
**7.2 - 7.6**

**ALKALINITY**  
Ideal level  
**80 - 150**  
ppm

**CALCIUM**  
Ideal level  
**100 - 200**  
ppm



# Balancing your spa water

Establishing and maintaining the correct water balance is important for a number of reasons:

**Bather Comfort • Protection of spa & spa equipment • Water quality & appearance • Chemical efficiency**



## pH

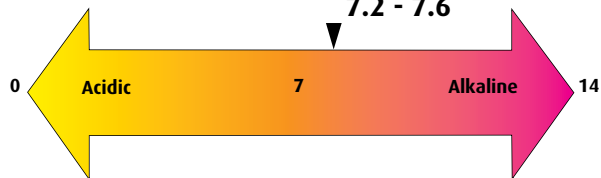
The pH of your spa water is important as it helps to ensure the spa water is comfortable for bathers and the water is neither too acidic nor alkaline, which can be damaging for the spa and spa components. pH 7.0 is neutral and for spas the pH should be maintained between 7.2 – 7.6.

**Low pH** – If the pH is below 7.2, you need to apply **Gold Horizons Spa pH Plus** to raise the level. Low pH can cause bather discomfort, unpleasant smells and cause damage to the spa shell and components.

**High pH** – If the pH is above 7.6, you need to apply **Gold Horizons Spa pH Minus** to lower the level. High pH can cause skin irritation, scale formation and cloudy water. A high pH will also reduce chlorine efficiency.

Spa volumes		Low pH (below 7.2)	High pH (above 7.6)
Litres	Gallons	Apply pH Plus	Apply pH Minus
1,000	220	11g	11g
1,500	330	17g	17g

## Ideal pH for Spas 7.2 - 7.6



## Total Alkalinity

Total alkalinity (TA) is a measure of the water's ability to resist pH change. If the total alkalinity is low, the pH can fluctuate making it difficult to maintain at the right level. If the total alkalinity is high the pH can be difficult to adjust. High total alkalinity can also lead to scale formation and cloudy water.

Spa TA Plus Dosing Table (if below 80mg/l (ppm))

Spa volumes		To increase TA by 10mg/l (ppm)	To increase TA by 25mg/l (ppm)
Litres	Gallons		
1,000	220	18g	45g
1,500	330	27g	68g

If the total alkalinity of your spa water is above 150mg/l (ppm), you can use **Gold Horizons pH Minus** to lower it. Pre-dissolve the Spa pH Minus then add to one area of the spa with just the circulation pump running. Repeat if necessary.

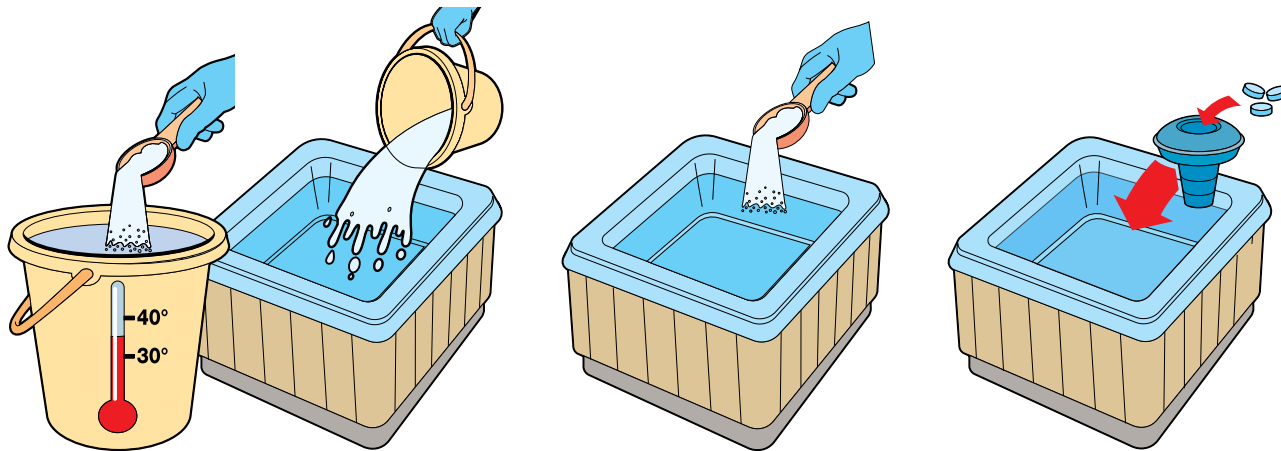
# Sanitise your spa water

Add sanitiser regularly to your spa to keep the water safe and bacteria-free. This can be achieved using chlorine or bromine. A selection of Gold Horizon sanitisers are offered either as granules or tablets, chlorine or bromine.

Product Characteristics	Spa Stabilised Chlorine Granules	Spa Multifunctional Chlorine Tablets	Mini Kwik Tablets	Spa Bromine Granules	Spa Bromine Tablets
Dissolving rate	Rapid	Slow	Rapid	Rapid	Slow
Stabilised?	Yes	Yes	Yes	Yes	No
pH of product	Neutral	Low	Neutral	Neutral	Neutral - low
Ease of dosing	Easy - direct dose	Easy - via a dispenser	Easy - direct dose	Easy - direct dose	Easy - via a dispenser
Efficacy	Over narrow pH range	Over narrow pH range	Over narrow pH range	Over wider pH range	Over wide pH range

## How to apply sanitiser to a hot tub

If using chlorine or bromine granules, dissolve granules in warm water (30 - 40°C) prior to adding to the tub. Pour the solution into the hot tub. Alternatively, chlorine or bromine granules can be dosed directly into the hot tub. If using chlorine or bromine tablets, place the tablets into a floating tablet dispenser and drop into the hot tub.



**Never mix chemicals including household cleaners as a dangerous reaction may occur.**

## FOR CHLORINE USERS

### Spa Chlorine Granules

A traditional, easy to dose chlorine granule  
Little effect on pH  
Rapid dissolving

### Spa Multifunctional 20g Chlorine Tablets

Convenient, slow release 20g chlorine tablet  
Apply via a floating dispenser for easy application  
High chlorine content - economical  
Contains a clarifier for crystal clear spa water

### Spa Mini Kwik Tablets

Fast dissolving 2.7g chlorine tablet  
No floating dispenser required  
Easy and convenient pre-measured dose for smaller volumes of water  
Little effect on pH

## FOR BROMINE USERS

### Spa Bromine Infused Granules

A highly effective alternative to chlorine  
Rapid dissolving granules for easy application  
Remains active over a wide pH range

### Spa Bromine Tablets

A popular alternative to chlorine  
Slow release 20g tablet for long lasting disinfection  
Apply via a floating dispenser for easy application  
Lower odour

## Oxidise your spa water

Oxidising or shock dosing your hot tub water is a term applied to the process of adding a higher than normal dose of an oxidiser chemical in order to control bacteria growth, destroy bather impurities or when commissioning the hot tub water from a fresh-fill.

### Spa Revive

Powerful dual-action oxidiser  
Destroys bather wastes  
Built-in clarifier provides sparkling clear spa water  
10ml measuring spoon included for easy application

### Spa Rapid Shock

A powerful, fast dissolving oxidiser  
High chlorine content - economical  
Destroys bather wastes  
Stabiliser-free  
Supplied with a 10ml measuring scoop

### Spa Non Chlorine Shock

A fast dissolving, chlorine-free shock granule  
Destroys swimmer wastes  
Fast acting  
Bathing can resume shortly after application

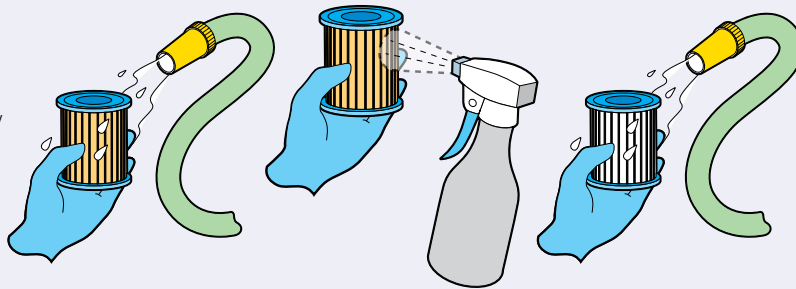
Product	Spa Commissioning	Problem Solver	Rapid Spa Re-entry	pH Neutral
Spa Revive		✓	✓	✓
Spa Non Chlorine Shock		✓	✓	
Spa Rapid Shock	✓	✓	✓	

# Cleaning your spa

A good cleaning regime will help to keep your spa looking in tip-top condition and the water sparkling clear. This includes keeping the spa surfaces clean including the waterline and spa lid. The spa filter cartridge(s) will also require regular cleaning along with periodic purging of the spa plumbing.

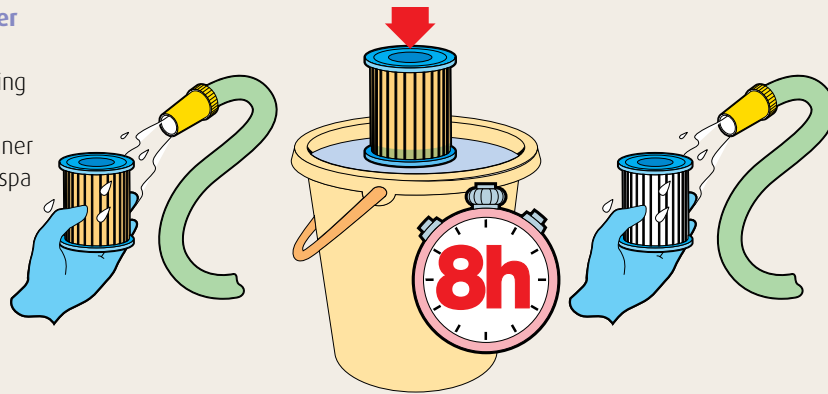
## Gold Horizons Spa Rapid Filter Kleen

Use Rapid Filter Kleen as part of your regular cleaning regime of your spa cartridge filters. Rapid Filter Kleen quickly removes oils, dirt and body fats utilising its unique 'no soak' formula. Use on a fortnightly basis or more frequently if your hot tub has high usage.



## Gold Horizons Spa Cartridge Cleaner

Debris and grease can quickly accumulate on cartridge filters impairing their performance. For a thorough monthly clean, use Spa Cartridge Cleaner to remove oils and grease from your spa cartridge filters.



## Gold Horizons Spa Shine 'n' Protect

This multi-purpose product both cleans and conditions acrylic, vinyl and rubber surfaces. Shine 'n' Protect polishes and protects surfaces from UV, moisture and harsh chemical degradation. Use on spa covers and acrylic spa surfaces.

# Draining and refilling your spa

Over time, your spa water can become 'stale' as it absorbs bathers wastes, chemicals and minerals. This can result in an increase in the total dissolved solids (TDS) level. The only way to lower TDS is to drain the spa water and refill with fresh. As a guide, your spa will need draining and refilling every 2 – 3 months, or more frequently with a heavily used spa. Use Spa Flush Plus or Spa Super Cleanse prior to draining.

## Gold Horizons Spa Super Cleanse

Spa Super cleanse is a highly effective and powerful cleaner for your spa pipework. Supplied as a 20g tablet, Spa Super Cleanse is designed as a pre-drain treatment. Always follow the dosing instructions on the product pack.

## Speciality Products

### Causes of cloudy water:

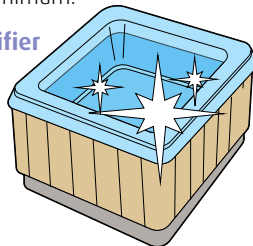
**Incorrect water balance • Poor filtration/dirty filter • Low sanitiser levels • Lack of oxidising**

### Gold Horizons Spa & Pool Perfect

The natural enzymes in Spa & Pool Perfect will help break down scum, body oils and cosmetics in your spa water. This will reduce clogged filters and waterline build-up. It can also help keep chlorine odours to a minimum.

### Gold Horizons Spa Natural Clarifier

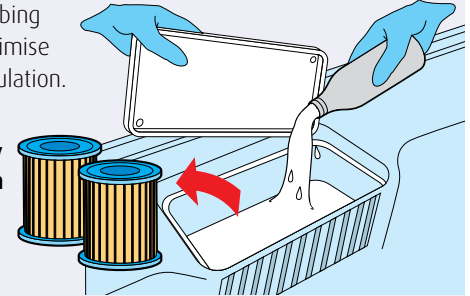
This strong and highly effective environmentally friendly clarifier rapidly clears away dirt and oil. One simple dose leaves your spa water clean, clear and sparkling.



### Gold Horizons Spa Flush Plus

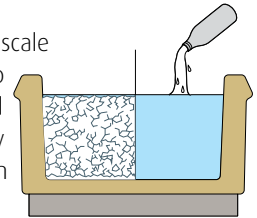
Spa Flush Plus has been specially formulated to remove soaps, grease and biofilm from hot tub plumbing. This pre-drain treatment should be applied quarterly to keep your spa plumbing clean and minimise biofilm accumulation.

### How to apply Hot Tub Flush



### Gold Horizons Spa Scale Free

Add to your spa water to help prevent scale deposits. These can build-up on hot tub surfaces due to high calcium levels and elevated water temperatures. A weekly dose will help prevent scale forming on the heater, pipework and spa surfaces.



### Gold Horizons Spa Foam Free

From time-to-time you may find that foam starts to appear in your spa. This is usually as a result of detergents on swimming costumes. It is recommended for bathers to shower with costumes on before using the hot tub. If foam does appear, spray Spa Foam Free sparingly at the areas here foam is appearing.

